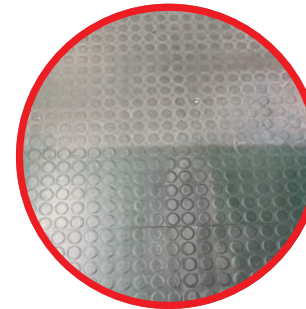


# APPLICATION RECOMMENDATIONS

|  | Surface sanding of freshly laid wooden flooring | Sanding of sealed parquet flooring | Renovation of oiled surfaces | Intermediate finish sanding | Reconditioning of laminate floors | Removal of marks | Reconditioning and cleaning of smooth hard flooring | Reconditioning and cleaning of structured hard flooring | Cleaning of heavily over-maintained floors | Reconditioning of strongly used surfaces | Oiling/Waxing | Removal of dust residue | Cleaning of smooth stone floors/tiles | Reconditioning of hard surfaces like marble, design screed |
|--|---|------------------------------------|------------------------------|-----------------------------|-----------------------------------|------------------|---|---|--|--|---------------|-------------------------|---------------------------------------|--|
| useit®-Superpad P 40                                   | X   | X                                  | X                            |                             |                                   |                  |   |   |  |  |               |                         |                                       |  |
| useit®-Superpad P 60                                   | X   | X                                  |                              |                             |                                   |                  |   |   |  |  |               |                         |                                       |  |
| useit®-Superpad P 80                                   | X   |                                    |                              | X                           |                                   |                  |   |   |  |  |               |                         |                                       |  |
| useit®-Superpad P 100-150                              |   |                                    | X                            | X                           |                                   |                  |   |   |  |  |               |                         |                                       |  |
| useit®-Superpad P 220-400                              |   |                                    |                              |                             | X                                 |                  |   |   |  |  |               |                         |                                       |  |
| Twill grit 36 (not perforated)                         | X   | X                                  |                              |                             |                                   |                  |   |   |  |  |               |                         |                                       |  |
| useit®-Abrafilm® P40                                   | X   | X                                  |                              |                             |                                   |                  |   |   |  |  |               |                         |                                       |  |
| useit®-Abrafilm® P60                                   | X   |                                    |                              |                             |                                   |                  |   |   |  |  |               |                         |                                       | X  |
| useit®-Abrafilm® P150                                  |   |                                    |                              | X                           |                                   |                  |   |   |  |  |               |                         |                                       | X  |
| useit®-Abrafilm® P240                                  |   |                                    |                              | X                           |                                   |                  |   |   |  |  |               |                         |                                       | X  |
| useit®-Abrafilm® P500-P3000                            |   |                                    |                              |                             |                                   |                  |   |   |  |  |               |                         |                                       | X  |
| useit®-Superfinishing Pad SG 240                       |   |                                    |                              |                             |                                   |                  |   |   | X  |  |               |                         |                                       |  |
| useit®-Superfinishing Pad SG 600                       |   |                                    |                              |                             | X                                 |                  | X   |   |  | X  |               |                         | X                                     |  |
| useit®-Superfinishing Pad SG1200-SG21800               |   |                                    |                              |                             | X                                 | X                | X   |   |  | X  |               |                         | X                                     |  |
| useit®-dust disc (in combination with dust extraction) |   |                                    |                              |                             |                                   |                  |   |   |  |  |               | X                       |                                       |  |
| takelit® green   |   |                                    | X                            |                             |                                   |                  |   |   |  |  | X             |                         |                                       |  |
| takelit® purple  |   |                                    |                              |                             |                                   |                  |   |   |  |  | X             |                         |                                       |  |
| Abbranopp® green                                       |   |                                    |                              |                             |                                   |                  |   | X   |  | X  |               |                         |                                       |  |
| Abbranopp® grey  |   |                                    |                              |                             |                                   |                  |   | X   |  |  |               |                         |                                       |  |
| Abbranopp® purple                                      |   |                                    |                              |                             |                                   |                  |   | X   |  | X  |               |                         |                                       |  |
| Blue Wave  |   |                                    |                              |                             |                                   | X                | X   | X   |  |  |               |                         | X                                     |  |

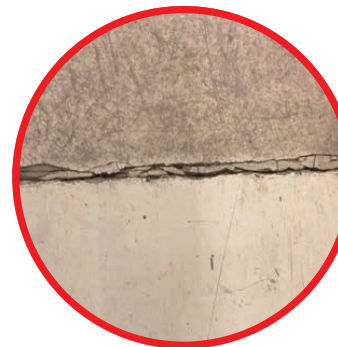
# SAMPLE APPLICATIONS



Cleaned with Floor Sander and Abbranopp grey wet only with water



Cleaning of old safety shower tray with Blue Wave



Cleaning of painted industrial flooring JÖST Floor Sander in combination with Blue Wave



Hard flooring cleaned with Blue Wave, only with water



Renovation of old parquet floor



Reconditioning of oiled parquet floor